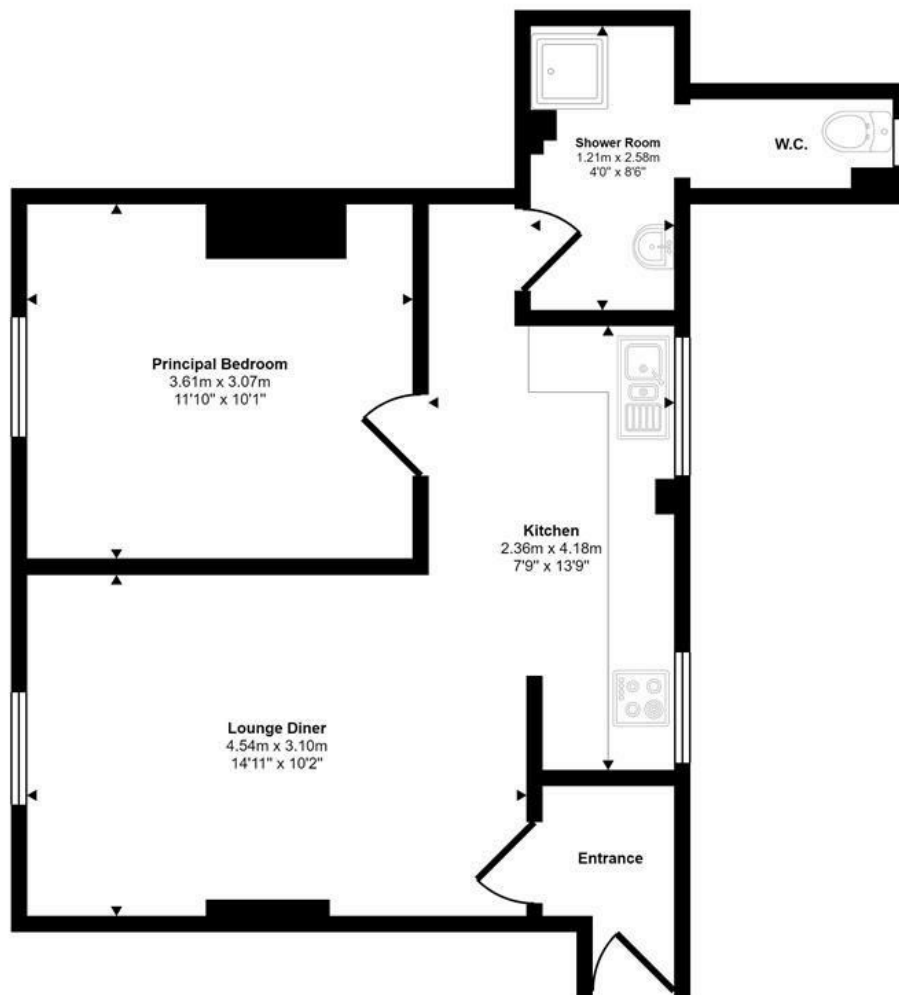




High Street | Norwich | NR11  
 Guide Price £140,000

abbotFox

Approx Gross Internal Area  
 42 sq m / 449 sq ft



Floorplan

Energy Efficiency Rating		
	Current	Potential
Very energy efficient - lower running costs		
(92 plus) A		
(81-91) B		
(69-80) C	77	77
(55-68) D		
(39-54) E		
(21-38) F		
(1-20) G		
Not energy efficient - higher running costs		
<b>England &amp; Wales</b>	EU Directive 2002/91/EC	

Disclaimer – In accordance with the Property Misdescriptions Act, the company gives notice that all descriptions, references to condition, necessary permissions for use and other details are given in good faith and believed to be correct, but any intending lessees do not rely on them as statements of fact, but must satisfy themselves by inspection or other means, as to their accuracy.

This floorplan is only for illustrative purposes and is not to scale. Measurements of rooms, doors, windows, and any items are approximate and no responsibility is taken for any error, omission or mis-statement. Icons of items such as bathroom suites are representations only and may not look like the real items. Made with Made Snappy 360.



abbotFox presents this exceptional, one bedroom first floor apartment. Situated within the popular and well serviced coastal village of Mundesley, this property has been successfully run as a holiday let business, but would also make a wonderful home for any buyer.

Overlooking the bowling green, and within easy reach of the Village centre and beach, Northfield House has been sympathetically converted in to apartments. This particular home is situated on the first floor, and comprises; an entrance hall, open plan lounge diner, kitchen area, generous double bedroom and shower room. The property further benefits from an allocated parking space. Offered to the market with no onward chain, an internal viewing comes highly recommended.

Guide Price £140,000 - £150,000

